



PAULIST FATHERS PRESENTATION

May 4, 2021

PROJECT TEAM



CPM Firm (Construction Manager)



Bob Waechter

CWC Team



Max Zarate
Project Manager



Tony Chippi
Superintendent



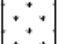








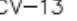
Brett Gleason
Project Engineer

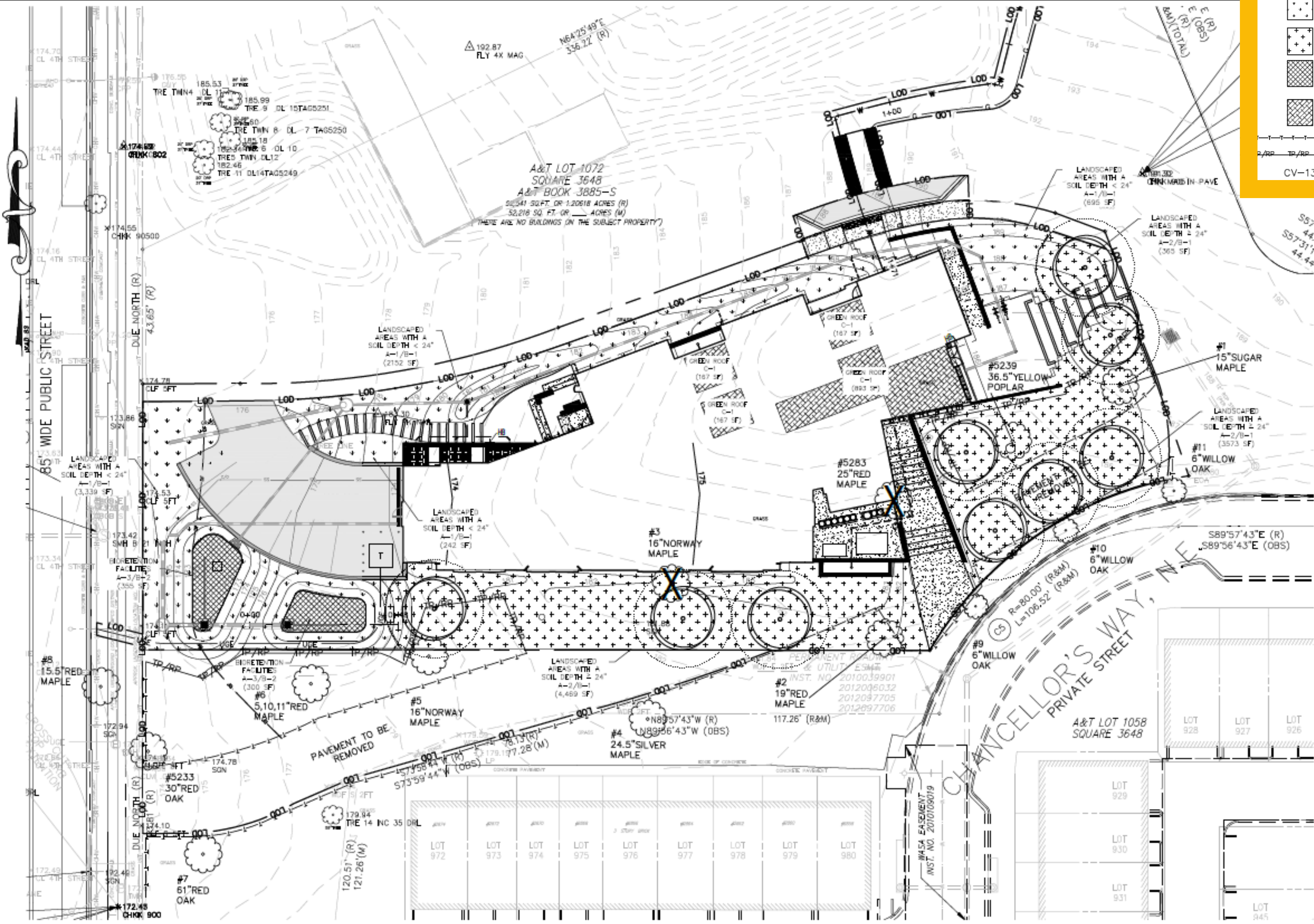
SITE PLAN



LANDSCAPE PLAN

LEGEND

	A-1 LANDSCAPED AREA WITH A SOIL DEPTH OF < 24"		EXISTING TREE
	A-2/B-1 GROUNDCOVERS, OR OTHER PLANTS 2' OR TALLER AT MATURITY, SOIL DEPTH OF ≥ 24"		EXISTING TREE TO BE REMOVED
	A-3/B-2 BIORETENTION FACILITIES, PLANTS ≥ 2' HEIGHT AT MATURITY		PROPOSED ORNAMENTAL TREE
	C-1 GREENROOF < 8" DEPTH		
	TREE PROTECTION FENCE (TEMPORARY)		
	COMBINED TPF & ROOT PRUNE TRENCH		
	PROPOSED PLANT LABEL		

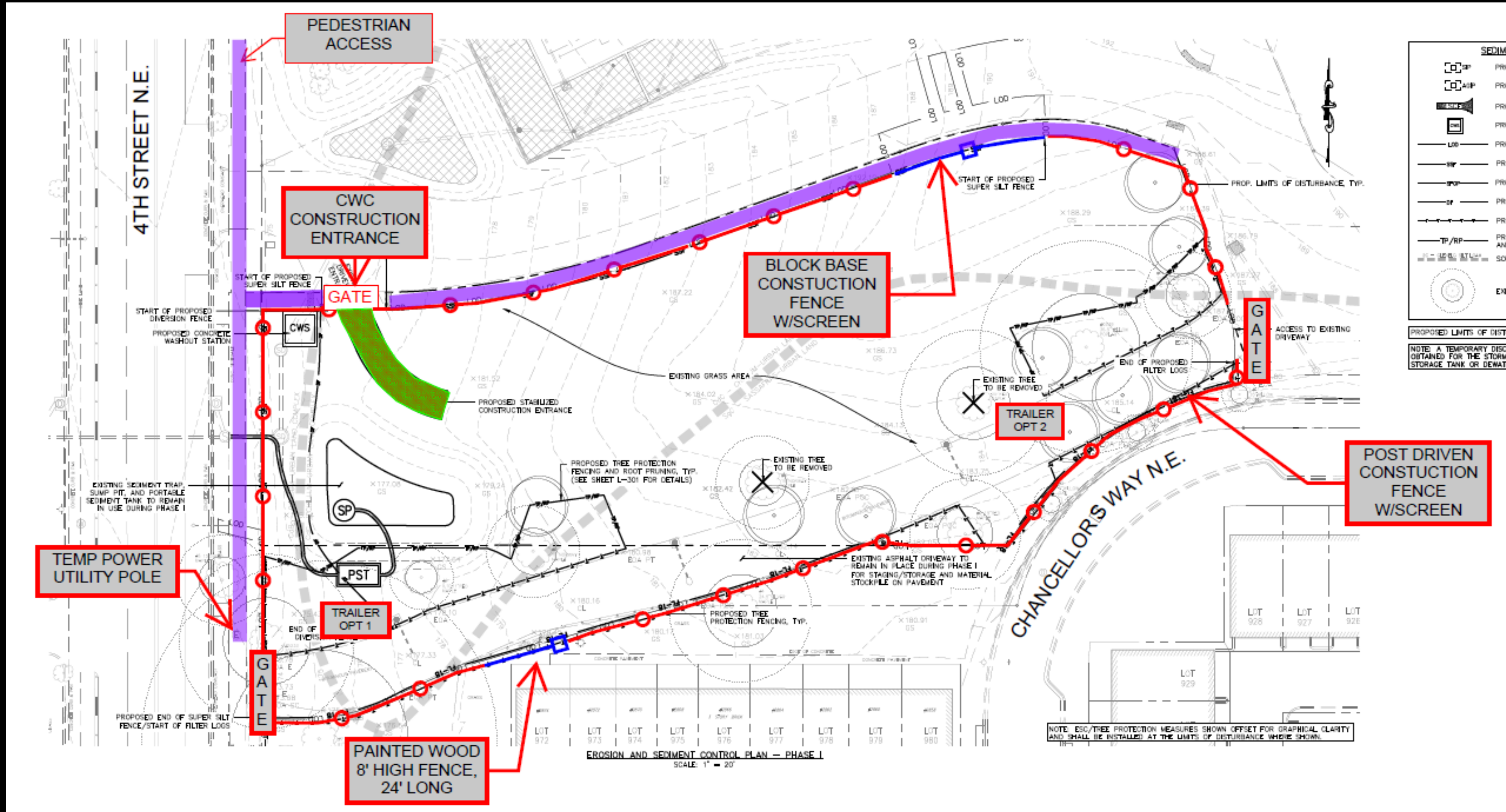


SCHEDULE

- Construction Start: **May 18, 2021**
- Building Substantially Dry: **December 20, 2021**
- Substantial Completion: **February 28, 2022**



SITE LOGISTICS PLAN



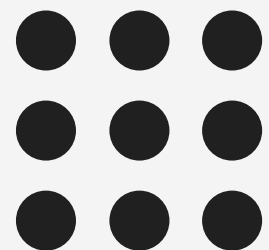
CONSTRUCTION DISTURBANCES

- Support of Excavation
 - Pile Driving: Estimated 4-5 weeks
 - Seismic Monitoring at adjacent townhouses
- Equipment Back-up Alarms
- Site Lighting
- Wooden fence being constructed along the fence line of nearest townhouses

COMMUNICATION

- CWC to provide delivery information on large materials and equipment.
- Open communication and coordination with Tripointe Homes will continue throughout the project
- Meeting with Townhouse neighbors to be scheduled.

QUESTIONS?



**THANK
YOU**